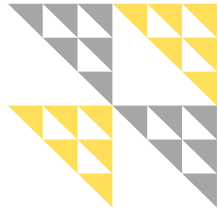




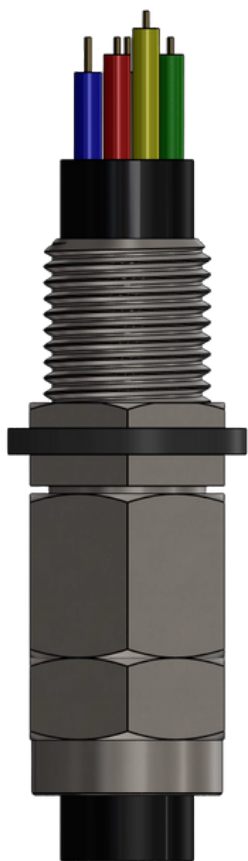
Manufacturer of High-Quality Cable Glands







INDEX



About Company	1
Vision & Mission	2
Why Choose Us?	3
Our Products	4
Size Chart	5
Quality	6
Contact Detail	7





▶ ▶

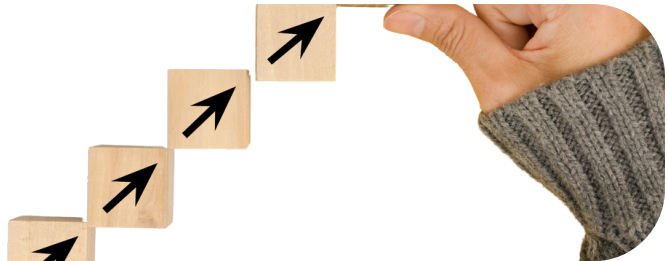
ABOUT J & J METAL

**Precision in every part,
reliability in every
product, crafts
solutions built to last,
driven by excellence
and innovation.**

J & J Metal is a premier manufacturer in the brass parts industry, specializing in high-quality brass components for diverse sectors, including automotive, electrical, plumbing, and hardware. With a strong focus on precision engineering and innovation, we ensure that each product meets the highest industry standards.

Our state-of-the-art manufacturing facility, equipped with advanced machinery and cutting-edge technology, enables us to produce reliable, durable, and cost-effective brass solutions tailored to the unique needs of our clients.

We are committed to excellence in craftsmanship, quality assurance, and customer satisfaction. Our dedication to continuous improvement and superior service makes us a trusted partner in the industry, delivering top-tier brass components that drive efficiency and performance.



A word cloud of business-related terms. The word 'mission' is the largest and most central. Other prominent words include 'communication', 'development', 'aspirations', 'business', and 'planning'. Smaller words scattered around include 'brand', 'factory', 'growth', 'rules', 'vision', 'management', 'customer', 'connect', 'analyzing', 'consumer', 'wealth', 'strategy', 'marketing', 'research', and 'investment'. The words are in various colors (blue, green, red, black) and orientations, giving it a dynamic, hand-drawn feel. There are also some abstract shapes like a blue triangle and a red triangle at the top, and a black scribble at the bottom.

Our mission is to be a one-stop solution for all industries by delivering high-quality, comprehensive products and services. By 2030, we aim to serve every industry segment, ensuring clients have access to the expertise, innovation, and reliability they need to succeed, with a strong commitment to customer satisfaction.





WHY CHOOSE US?

We prioritize customer satisfaction through customized solutions, on-time delivery, and dedicated support. With a strong focus on innovation, eco-friendly practices, and cost-effective solutions, we are a trusted partner committed to driving your success in a competitive market.

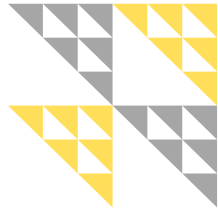
Choose J & J Metal for unmatched quality, expertise, and service - experience the difference that true craftsmanship and commitment can make in your industry.

We are dedicated to delivering top-quality brass components, precisely engineered to meet the unique needs of every industry. Our state-of-the-art manufacturing facility, combined with advanced technology and precision craftsmanship, ensures exceptional durability and reliability in every product.





PRODUCTS



PVC HOOD



EARTH TAG



SC GLAND



PG GLAND



PUSH BUTTON



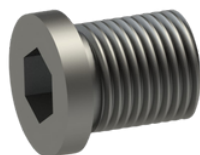
HEX PLUG



ELECTRIC PIN

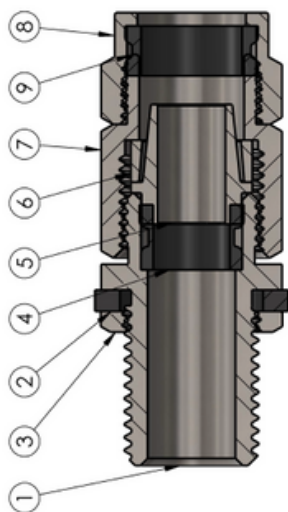
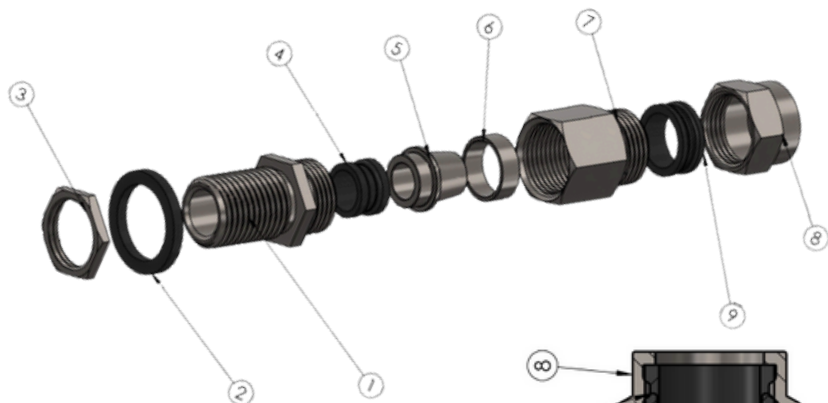


ELLEN KEY PLUG





CABLE GLAND



SECTION A-A





CABLE GLAND SIZE



Metric & PG Cable Gland Size Chart

Cable Gland Size	Thread Size (Metric)	Cable Diameter Range (mm)	Across Flats (AF) (mm)	Across Corners (AC) (mm)	Thread Length (mm)	PG Size	Cable Diameter Range (mm)	Thread Outer Diameter (mm)	Thread Length (mm)
M12	M12 x 1.5	3 - 6.5	15	16.5	8	PG7	3 - 6.5	12.5	6
M16	M16 x 1.5	4 - 8	18	20	9	PG9	4 - 8	15.2	6
M20	M20 x 1.5	6 - 12	22	24	10	PG11	5 - 10	18.6	6
M25	M25 x 1.5	9 - 16	27	30	10	PG13.5	6 - 12	20.4	6
M32	M32 x 1.5	11 - 21	33	36	10	PG16	10 - 14	22.5	6
M40	M40 x 1.5	19 - 28	42	45	10	PG21	13 - 18	28.3	7
M50	M50 x 1.5	27 - 35	54	57	12	PG29	18 - 25	37	8
M63	M63 x 1.5	34 - 44	65	68	12	PG36	22 - 32	47	8
						PG42	32 - 38	54	9
						PG48	37 - 44	59.3	9

Double Compression Cable Gland Size Chart

GLAND SIZE	THREAD TYPE		THREAD LENGTH		OVERALL DIA		CABLE BEDDING DIA	
	METRIC	NPT	METRIC	NPT	MIN	MAX	MIN	MAX
01SS	M20	1/2"	25	20	8	13	3.2	8.6
01S	M20	1/2"	25	20	15	18	9	12
1	M20	1/2"	25	20	19	21	11	14
2	M25	3/4"	25	22	22	25	13	20
3	M25	3/4"	25	22	23	26	13	20
4	M25	3/4"	25	22	24	27	15	20
5	M32	1"	25	25	27	30	20	24
6	M40	1.1/4"	25	26	33	35	25	28
7	M40	1.1/4"	25	26	33	38	27	30
8	M50	1.1/2"	25	27	38	41	31	35
9	M50	2"	25	27	42	46	34	40
10	M50	2"	25	40	46	52	41	46
11	M63	2"	25	42	53	60	47	50
12	M75	2.1/2"	25	44	61	66	53	60
13	M75	2.1/2"	25	44	67	72	61	66



OUR QUALITY

Uncompromising Quality Standards

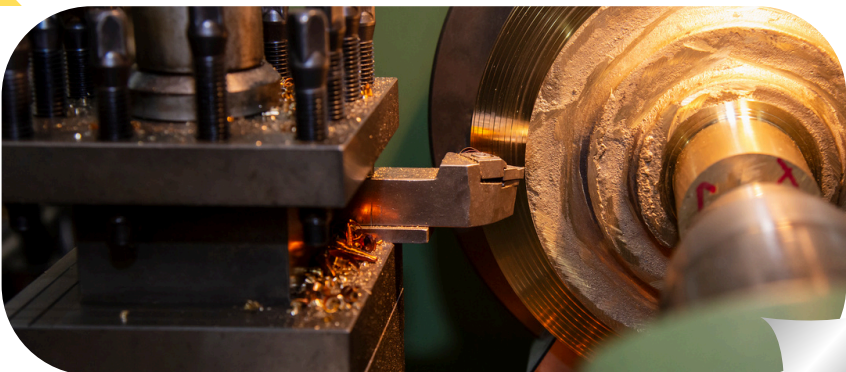
From the selection of raw materials to the final inspection of each product, we follow rigorous quality control processes to ensure that every component meets the highest standards. Our advanced manufacturing facilities are equipped with state-of-the-art technology, enabling us to maintain precision and consistency in every piece we produce. This unwavering commitment to quality not only ensures product reliability but also reinforces our reputation as a trusted leader in the brass industry

Customer-Centric Quality Philosophy

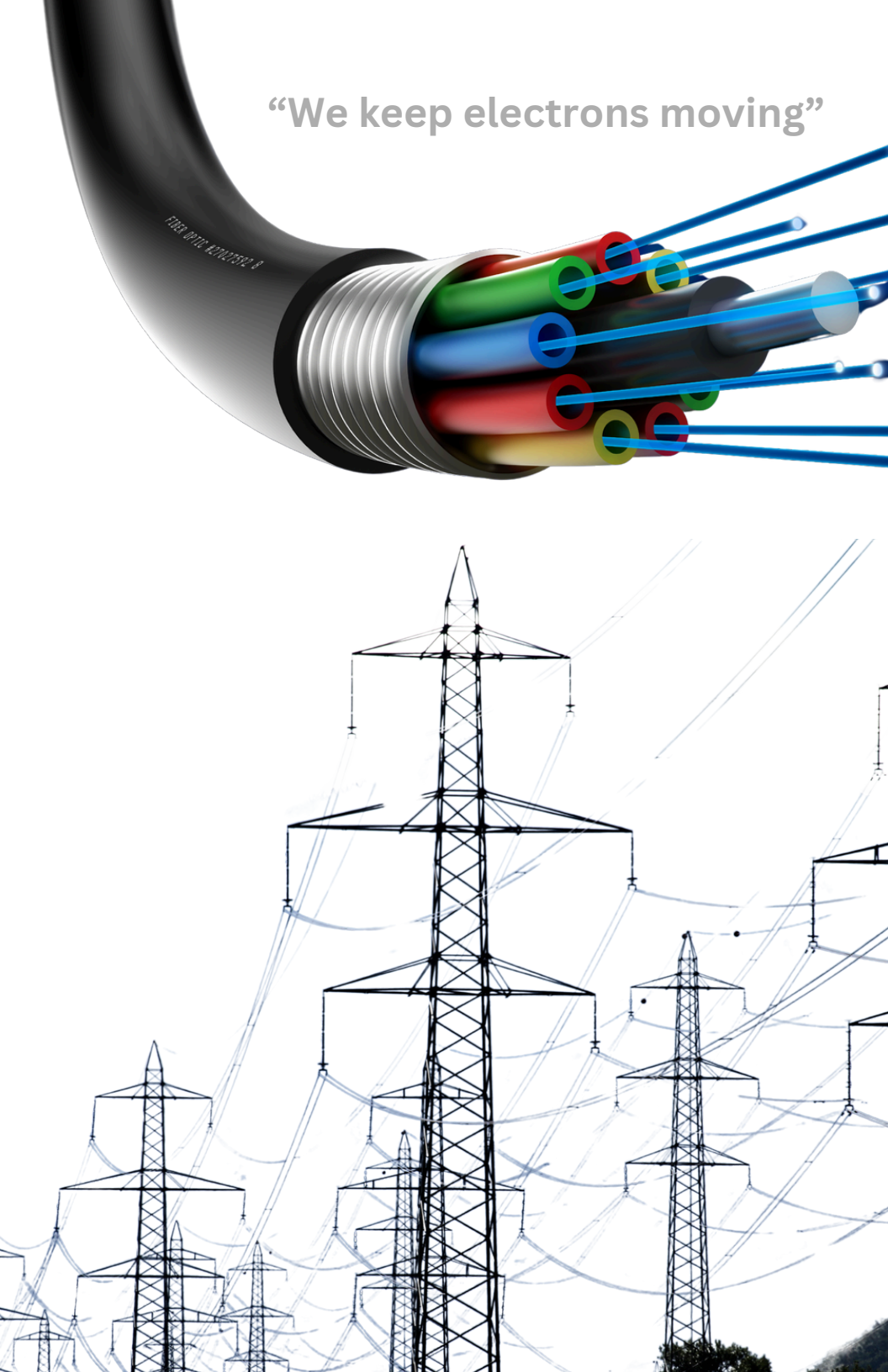
we work closely with our clients to understand their unique requirements and provide tailored solutions that align with their needs. By investing in continuous improvement and innovation, we ensure that our products remain at the forefront of industry advancements. Our dedication to delivering exceptional quality reflects our mission to build lasting relationships with our customers based on trust, reliability, and excellence.

Attention to Detail in Every Step

From design and development to manufacturing and testing, we emphasize precision and adherence to international standards. Every product undergoes multiple levels of testing, including dimensional accuracy, durability, and performance under varying conditions. This comprehensive process guarantees that our brass components deliver optimal functionality and longevity, even in the most demanding applications



“We keep electrons moving”





CONTACT



+91 63543 37767
+91 99987 31240
+91 94091 77720



jj@jjmetal.in, jnjmetals@outlook.com



www.jjmetal.in



PLOT 3111,
GIDC Phase 3, Dared,
Jamnagar - 361004,
Gujarat, India



CERTIFIED BY

